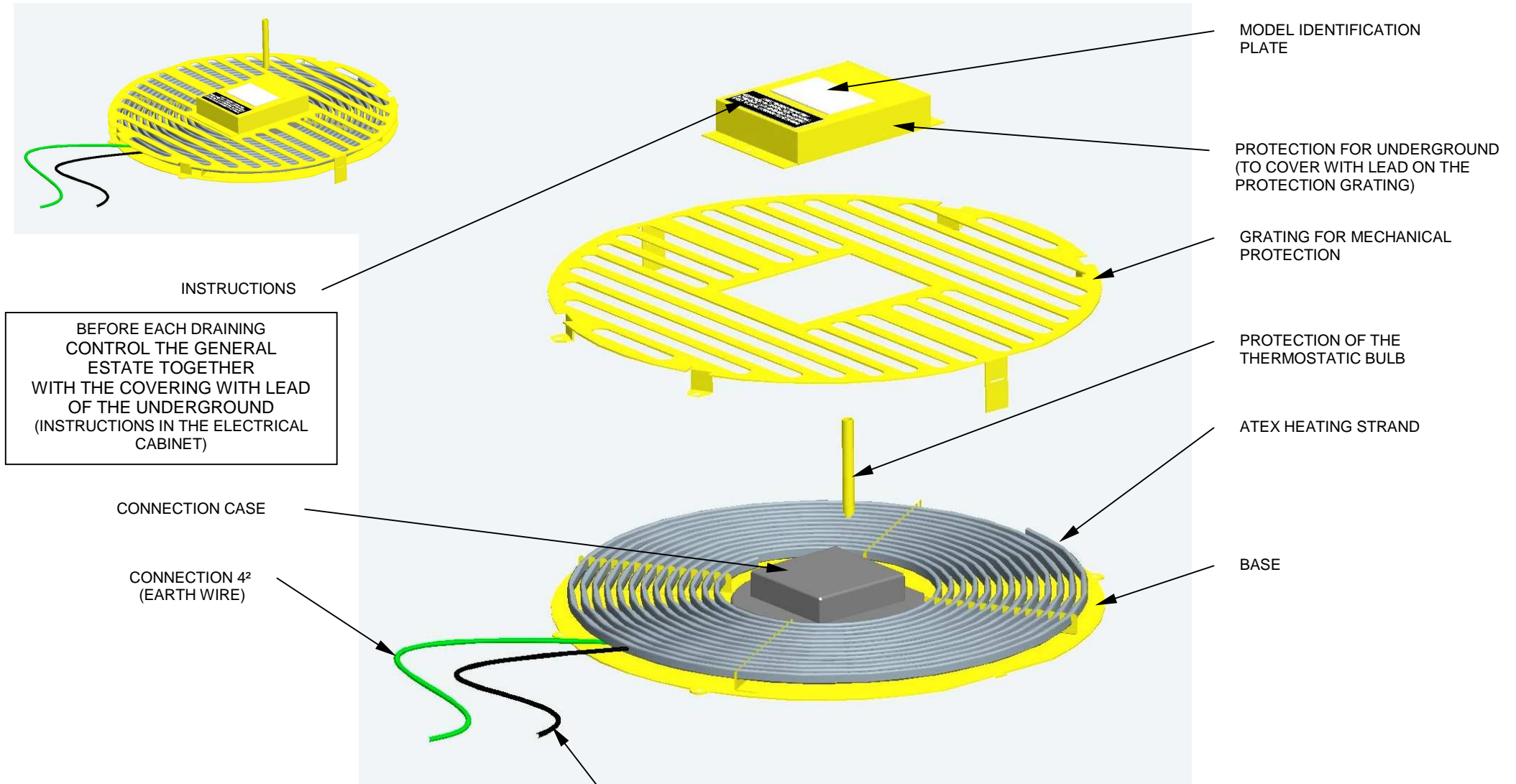




# Heating cap

DOC : P 0015  
04-04-08 IND-00



INSTRUCTIONS

BEFORE EACH DRAINING  
CONTROL THE GENERAL  
ESTATE TOGETHER  
WITH THE COVERING WITH LEAD  
OF THE UNDERGROUND  
(INSTRUCTIONS IN THE ELECTRICAL  
CABINET)

- MODEL IDENTIFICATION PLATE
- PROTECTION FOR UNDERGROUND (TO COVER WITH LEAD ON THE PROTECTION GRATING)
- GRATING FOR MECHANICAL PROTECTION
- PROTECTION OF THE THERMOSTATIC BULB
- ATEX HEATING STRAND
- BASE

CONNECTION CASE

CONNECTION 4<sup>2</sup>  
(EARTH WIRE)

LEAD FOR THE ELECTRICAL GENERAL SUPPLY  
1000 R02 V3 G1.5 220V-MONO  
WITH A DIFFERENTIAL PROTECTION 30 Ma

**FLUIDES PETROLE SERVICES**  
Tous Travaux GPL  
ZA La Boissonnette - 07340 PEAUGRES  
Tél. : +33 (0) 4 75 32 53 01 - Fax : +33 (0) 4 75 32 52 87  
RCS ANNONAY 441 872 587 - APE 743 B